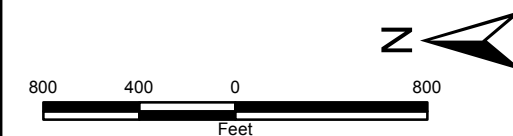


Exhibit A Current & Proposed Property Limits

Legend

- Existing Approach Surfaces
- Future Approach Surfaces
- Future Airfield Improvements
- Existing Airport Property Line
- Future Airport Property Line
- Sections
- Existing Avigation Easements
- Future Avigation Easements
- Released Parcels
- Existing Parcels in Fee
- Future Parcels in Fee



CMT Job No.: 00290-08
Date: February, 2012
Map: Current & Proposed Property
Notes: Photo by NAIP, 2011
Data Input: BWN
Checked By: LJS
Approved By: RAA

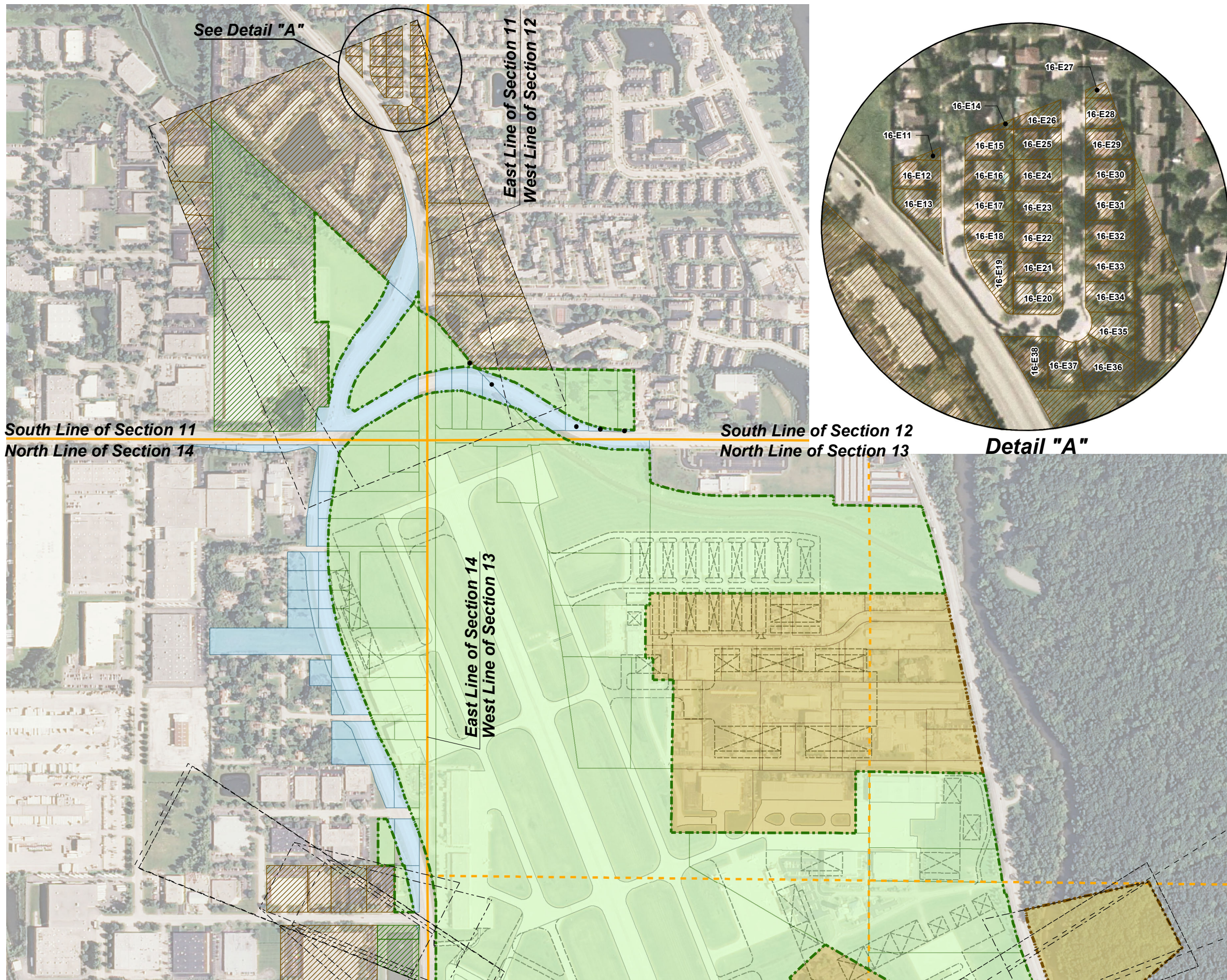


Exhibit A Northern Airfield Property

Legend

- Existing Approach Surfaces
- Future Approach Surfaces
- Existing Threshold Siting Surfaces
- Future Threshold Siting Surfaces
- Future Airfield Improvements
- Existing Airport Property Line
- Future Airport Property Line
- Sections
- Existing Avigation Easements
- Future Avigation Easements
- Released Parcels
- Existing Parcels in Fee
- Future Parcels in Fee



CMT Job No.: 00290-08
Date: July, 2006
Updated: February, 2012
Map: North Airfield Property
Notes: Photo by NAIP, 2011
Data Input: BWN
Checked By: LJS
Approved By: RAA



CRAWFORD, MURPHY & TILLY, INC.

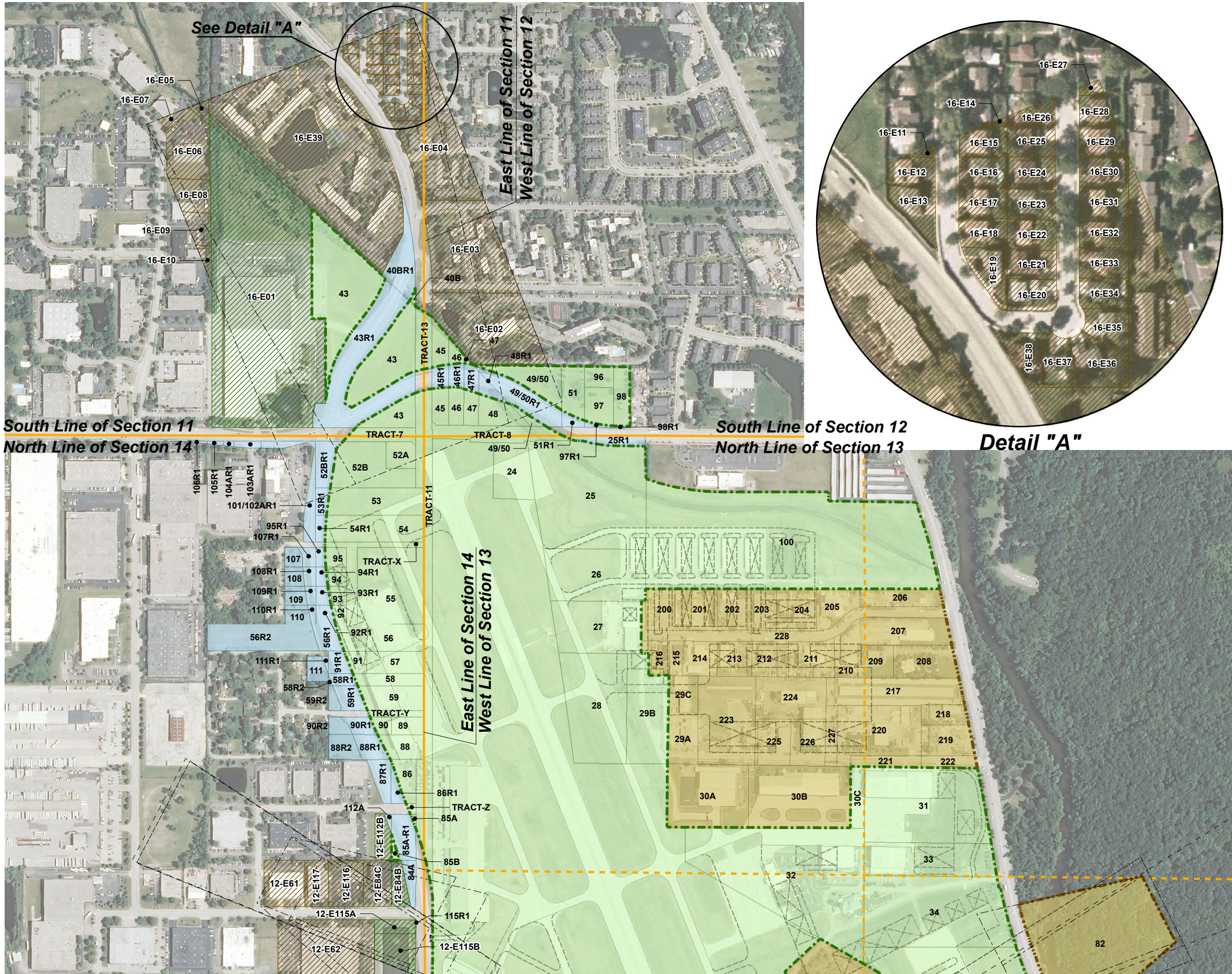


Exhibit A Northern Airfield Property

Legend

- Existing Approach Surfaces
- Future Approach Surfaces
- Existing Threshold Siting Surfaces
- Future Threshold Siting Surfaces
- Future Airfield Improvements
- Existing Airport Property Line
- Future Airport Property Line
- Sections
- Existing Avigation Easements
- Future Avigation Easements
- Released Parcels
- Existing Parcels in Fee
- Future Parcels in Fee



CMT Job No.: 00290-08
Date: July, 2006
Updated: July, 2013
Map: North Airfield Property
Notes: Photo by NAIP, 2012
Data Input: BWN
Checked By: LJS
Approved By: RAA

PARCEL #	Existing (E) Future (F)	ExistingPREVIOUS OWNER	AREA			FAA PROJ. # ADAP/AIP	DATE ACQUIRED	Remarks	SHEET #
			CURRENT	PURCHASED	FAA PART.				
1	Existing	George J. Priestster	266.369	266.369	266.340	AIP-01	6/1/1986	See Remarks	3,4
20B	Existing	American National Bank & Trust Company. Chicago Trust #25528	2.320	2.320	2.320	AIP-06	2/1/1990		4
21	Existing	Harold G. Weiss & Lillian B. Weiss	1.540	1.540	1.540	AIP-06	6/1/1990		4
22	Existing	Erwin Koelper	0.870	0.870	0.870	AIP-06	8/1/1992		4
23A	Existing	See Remarks	2.630	2.630	2.630	AIP-06	8/1/1992	See Remarks	4
23B	Existing	Erwin Koelper & Mabel H. Koelper	0.870	0.870	0.870	AIP-06	8/1/1992		4
24	Existing	Frank R. Chupich & Margaret S. Chupich	1.790	1.790	1.790	AIP-01	9/1/1992		3
25	Existing	Main Bank Trust #78-227	10.427	10.620	10.620	AIP-02	3/30/1990	See Releases	3
26	Existing	Evanston Bank Trust #704	4.170	4.170	4.170	AIP-02	11/13/1990		3
27	Existing	K & L, Braum & Kerr	3.920	3.920	3.920	AIP-01	5/1/1991		3
28	Existing	Cole Taylor Bank Trust #78-179	5.540	5.540	5.540	AIP-01	10/1/1990		3
29B	Existing	Chicago Titile & Trust Company Trust #1082519	3.380	3.380	3.380	AIP-02	12/30/1987		3
30C	Existing	Allstate Insurance Company	0.731	0.731	0.731	AIP-02	1/12/1990		3
31	Existing	Allstate Insurance Company	8.040	8.040	8.040	AIP-02	1/12/1990		3
32	Existing	Advance Transportation Company	12.460	12.460	12.460	AIP-01	9/1/1987		3
33	Existing	Advance Transportation Company	3.750	3.750	3.750	AIP-01	9/1/1987		3
34	Existing	Advance Transportation Company	8.880	8.880	8.880	AIP-01	9/1/1987		3
40B	Existing	Algumated Trust & Savings Bank	0.032	1.372	1.372	AIP B6	1/20/1993	See Releases	3
43	Existing	Old Orchard Bank & Trust Company	9.127	13.907	13.907	AIP-06	6/1/1991		3
45	Existing	Kolton	1.120	1.430	1.430	AIP-05	1/1/1991		3
46	Existing	Citizens Bank & Trust Company	0.760	1.080	1.080	AIP-06	1/1/1991		3
47	Existing	Edward Grandt & Doleres Grandt	0.490	0.810	0.810	AIP-07	3/27/1992	See Releases	3
48	Existing	Henry Decicco & Carol Decicco	0.930	1.160	1.160	AIP-06	2/28/1992	See Releases	3
49/50	Existing	Society of Danube Swabians	1.670	3.250	3.250	AIP B6	7/10/1992		3
51	Existing	Chester Jo Bialczak	0.960	1.180	1.180	AIP-B6	7/19/1990	See Releases	3
52A	Existing	Marathon Oil Company	0.740	0.740	0.740	AIP-05	12/19/1988		3
52B	Existing	Emro Land Companay	3.510	4.260	4.260	AIP-05	12/19/1988	See Releases	3
53	Existing	Louis Pinto Pintacura & Vivian Pinto Pintacura	2.200	2.500	2.500	AIP-B7	2/1/1993	See Releases	3
54	Existing	Industrial Towel & Uniform Inc.	2.260	2.500	2.500	AIP-06	6/13/1990	See Releases	3
55	Existing	Paul Szendroil (Universal Air Motive)	3.790	3.790	3.790	AIP-06	5/1/1992		3
56	Existing	Warren G. Ely; Marrengo State Bank	1.770	4.790	4.790	AIP-B6	1/27/1993	See Releases	3
57	Existing	Richard S. Wells & Stella Wells	1.080	1.080	1.080	AIP-B6	8/1/1992		3
58	Existing	James Alexakos	0.720	1.000	1.000	AIP-B6	7/13/1990	See Releases	3

PARCEL #	Existing (E) Future (F)	ExistingPREVIOUS OWNER	AREA			FAA PROJ. # ADAP/AIP	DATE ACQUIRED	Remarks	SHEET #
			CURRENT	PURCHASED	FAA PART.				
59	Existing	John & Lynn Traff	1.280	1.990	1.990	AIP-B6	9/8/1992	See Releases	3
84	Existing	WW Grainger Inc.	0.595	0.975	0.975	AIP-B7	4/1/1993	See Releases	3
85	Existing	Marquardt	0.868	0.970	0.970	AIP-B7	4/5/1993		3
86	Existing	1st National Bank of Desplains Trust # 20382038	0.650	0.930	0.930	AIP-B6	8/25/1992	See Releases	3
88	Existing	Eleanor Kasper	0.845	1.995	1.995	AIP-B6	8/2/1992	See Releases	3
89	Existing	Roberts	0.504	0.504	0.504	AIP-B7	3/1/1993		3
90	Existing	Michael M. Marquardt	0.250	0.950	0.950	AIP-B7	2/23/1993	See Releases	3
91	Existing	William F. Nemitz	0.334	0.714	0.714	AIP-B7	1/28/1993	See Releases	3
92	Existing	Paul & Elizabeth Szendroi	0.216	0.496	0.216	AIP-B6	1/5/1993	See Releases	3
93	Existing	Paul & Elizabeth Szendroi	0.276	0.496	0.276	AIP-B6	11/24/1992	See Releases	3
94	Existing	Charlotte Hallman	0.316	0.496	0.316	AIP-B6	1/5/1993	See Releases	3
95	Existing	Richard Smith & Leah Zelders	0.336	0.496	0.496	AIP-B7	3/1/1993	See Releases	3
96	Existing	Cole Taylor Bank	0.503	0.503	0.503	AIP-B6	8/28/1992		3
97	Existing	William & Lillian Mykytivk	0.893	0.983	0.893	AIP-B6	10/27/1992	See Releases	3
98	Existing	Elmer C. Grandt & Ruth E. Grandt	0.829	0.849	0.829	AIP-B6	7/27/1992	See Releases	3
100	Existing	Milwuakee Amusement / M&R Theaters / Loews Theaters	23.581	23.581	23.581	AIP-B11	10/31/1997		3
112	Existing	B&F Hestad	0.591	0.648	0.591	AIP-B6	1/13/1993	See Releases	3
TRACT-7	Existing	Cook County	0.770	0.770				See Remarks	3
TRACT-8	Existing	Cook County	1.942	1.942				See Remarks	3
TRACT-11	Existing	State of Illinois	5.904	5.904				See Remarks	3
TRACT-13	Existing	State of Illinois	0.884	0.884				See Remarks	3
TRACT-X	Existing	Village of Wheeling	1.127	1.127				See Remarks	3
TRACT-Y	Existing	Village of Wheeling	0.306	0.306				See Remarks	3
TRACT-Z	Existing	Village of Wheeling	0.070	0.070				See Remarks	3
20A	Future	Main Bank Trust #80-201	2.620						4
30A	Future	Household International Inc.	4.345						4
30B	Future	Allstate Insurance Company	5.376						4
29C	Future	Wheeling Trust 78	0.966						3
29A	Future	Chicago Title & Trust Company Trust #1082519	1.252						3
34-01	Existing	First National Bank of Skokie	3.637			317 SBGP-65			4
34-02	Existing	First National Bank of Skokie	2.026			317 SBGP-65			4
34-03	Future	SLS Management Inc.	3.805						4
34-04	Future	SLS Management Inc.	0.737						4

PARCEL #	Existing (E) Future (F)	ExistingPREVIOUS OWNER	AREA			FAA PROJ. # ADAP/AIP	DATE ACQUIRED	Remarks	SHEET #
			CURRENT	PURCHASED	FAA PART.				
52A	Existing	Marathon Oil Company	0.740	0.740	0.740	AIP-05	12/19/1988		3
52B	Existing	Emro Land Companay	3.510	4.260	4.260	AIP-05	12/19/1988	See Releases	3
53	Existing	Louis Pinto Pintacura & Vivian Pinto Pintacura	2.200	2.500	2.500	AIP-B7	2/1/1993	See Releases	3
54	Existing	Industrial Towel & Uniform Inc.	2.260	2.500	2.500	AIP-06	6/13/1990	See Releases	3
55	Existing	Paul Szendroil (Universal Air Motive)	3.790	3.790	3.790	AIP-06	5/1/1992		3
56	Existing	Warren G. Ely; Marrengo State Bank	1.770	4.790	4.790	AIP-B6	1/27/1993	See Releases	3
57	Existing	Richard S. Wells & Stella Wells	1.080	1.080	1.080	AIP-B6	8/1/1992		3
58	Existing	James Alexakos	0.720	1.000	1.000	AIP-B6	7/13/1990	See Releases	3
59	Existing	John & Lynn Traff	1.280	1.990	1.990	AIP-B6	9/8/1992	See Releases	3
85A	Existing	Marquardt	0.038	0.870	0.870	AIP-B7	4/5/1993	See Releases 84A	3
85B	Existing	Marquardt	0.102	0.102	0.102	AIP-B7	4/5/1993		3
86	Existing	1st National Bank of Desplains Trust # 20382038	0.650	0.930	0.930	AIP-B6	8/25/1992	See Releases	3
88	Existing	Eleanor Kasper	0.842	1.995	1.995	AIP-B6	8/2/1992	See Releases	3
89	Existing	Roberts	0.504	0.504	0.504	AIP-B7	3/1/1993		3
90	Existing	Michael M. Marquardt	0.263	0.950	0.950	AIP-B7	2/23/1993	See Releases	3
91	Existing	William F. Nemitz	0.334	0.714	0.714	AIP-B7	1/28/1993	See Releases	3
92	Existing	Paul & Elizabeth Szendroi	0.216	0.496	0.216	AIP-B6	1/5/1993	See Releases	3
93	Existing	Paul & Elizabeth Szendroi	0.276	0.496	0.276	AIP-B6	11/24/1992	See Releases	3
94	Existing	Charlotte Hallman	0.316	0.496	0.316	AIP-B6	1/5/1993	See Releases	3
95	Existing	Richard Smith & Leah Zelders	0.336	0.496	0.496	AIP-B7	3/1/1993	See Releases	3
96	Existing	Cole Taylor Bank	0.503	0.503	0.503	AIP-B6	8/28/1992		3
97	Existing	William & Lillian Mykytivk	0.893	0.983	0.893	AIP-B6	10/27/1992	See Releases	3
98	Existing	Elmer C. Grandt & Ruth E. Grandt	0.829	0.849	0.829	AIP-B6	7/27/1992	See Releases	3
100	Existing	Milwuakee Amusement / M&R Theaters / Loews Theaters	23.581	23.581	23.581	AIP-B11	10/31/1997		3
TRACT-7	Existing	Cook County	0.770	0.770				See Remarks	3
TRACT-8	Existing	Cook County	1.942	1.942				See Remarks	3
TRACT-11	Existing	State of Illinois	5.904	5.904				See Remarks	3
TRACT-13	Existing	State of Illinois	0.884	0.884				See Remarks	3
TRACT-X	Existing	Village of Wheeling	1.127	1.127				See Remarks	3
TRACT-Y	Existing	Village of Wheeling	0.306	0.306				See Remarks	3
TRACT-Z	Existing	Village of Wheeling	0.070	0.070				See Remarks	3
20A	Future	Main Bank Trust #80-201	2.620						4
30A	Future	Household International Inc.	4.345						4

PARCEL #	PREVIOUS OWNER	AC. RELEASED	DATE RELEASED	REMARKS	SHEET #
1R1	PMAC	0.026	2/5/2002	Part of Parcel 1 released for ROW Improvements for Palantine Road	4
1R2	PMAC	0.010	2/5/2002	Part of Parcel 1 released for Improvments to Milwaukee Ave.	4
20BR1	PMAC	0.017	2/5/2002	Part of Parcel 20B released for ROW Improvements for Palantine Road	4
21R1	PMAC	0.009	2/5/2002	Part of Parcel 21 released for ROW Improvements for Palantine Road	4
23AR1	PMAC	0.007	2/5/2002	Part of Parcel 23A released for ROW Improvements for Palantine Road	4
25R1	PMAC	0.193		Part of Parcel 25 released for relocated Hintz Road	3
40BR1	PMAC	1.340		Part of Parcel 40 released for relocated Wolf Road	3
43R1	PMAC	4.780		Part of Parcel 43 released for relocated Hintz & Wolf Road	3
45R1	PMAC	0.310		Part of Parcel 45 released for relocated Hintz Road	3
46R1	PMAC	0.320		Part of Parcel 46 released for relocated Hintz Road	3
47R1	PMAC	0.320		Part of Parcel 47 released for relocated Hintz Road	3
48R1	PMAC	0.230		Part of Parcel 48 released for relocated Hintz Road	3
49/50R1	PMAC	1.580		Part of Parcel 49 released for relocated Hintz Road	3
51R1	PMAC	0.220		Part of Parcel 51 released for relocated Hintz Road	3
52BR1	PMAC	0.750		Part of Parcel 52B released for relocated Wolf Road	3
53R1	PMAC	0.300		Part of Parcel 53 released for relocated Wolf Road	3
54R1	PMAC	0.240		Part of Parcel 54 released for relocated Wolf Road	3
56R1	PMAC	0.560		Part of Parcel 56 released for relocated Wolf Road	3
56R2	PMAC	2.459		2.459 ac. Of the 4.23 ac., of Parcel 56 released to public, excess land for relocated Wolf Road	3
58R1	PMAC	0.260		Part of Parcel 58 released for relocated Wolf Road	3
58R2	PMAC	0.021		0.021 ac. Of the remaining 0.74 ac., of the original (1.0 ac.) of Parcel 58 released to public, excess land for relocated Wolf Road	3
59R1	PMAC	0.520		Part of Parcel 59 released for relocated Wolf Road	3
59R2	PMAC	0.190		0.19 ac., of the remaining 1.47 ac., of the original (1.99ac.) of Parcel 59 released to public, excess land for relocated Wolf Road	3
84A	PMAC	0.381		Part of Parcel 84 released for relocated Wolf Road	3
85A-R1	PMAC	0.840		Part of Parcel 85B released for relocated Wolf Road	3
86R1	PMAC	0.280		Part of Parcel 86 released for relocated Wolf Road	3
87R1	PMAC	0.600		Part of Parcel 87 released for relocated Wolf Road	3
88R1	PMAC	0.560		Part of Parcel 88 released for relocated Wolf Road	3
88R2	PMAC	0.593		0.59 ac., of the remaining 1.44 ac., of the original (1.995ac.) of Parcel 88 released to public, excess land for relocated Wolf Road	3
90R1	PMAC	0.400		Part of Parcel 90 released for relocated Wolf Road	3
90R2	PMAC	0.287		0.287 ac., of the remaining 0.55 ac., of the original (.95 ac.) of Parcel 90 released to public, excess land for relocated Wolf Road	3
91R1	PMAC	0.380		Part of Parcel 91 released for relocated Wolf Road	3
92R1	PMAC	0.280		Part of Parcel 92 released for relocated Wolf Road	3
93R1	PMAC	0.220		Part of Parcel 93 released for relocated Wolf Road	3
94R1	PMAC	0.180		Part of Parcel 94 released for relocated Wolf Road	3

PARCEL #	PREVIOUS OWNER	AC. RELEASED	DATE RELEASED	REMARKS	SHEET #
1R1	PMAC	0.026	2/5/2002	Part of Parcel 1 released for ROW Improvements for Palantine Road	4
1R2	PMAC	0.010	2/5/2002	Part of Parcel 1 released for Improvments to Milwaukee Ave.	4
20BR1	PMAC	0.017	2/5/2002	Part of Parcel 20B released for ROW Improvements for Palantine Road	4
21R1	PMAC	0.009	2/5/2002	Part of Parcel 21 released for ROW Improvements for Palantine Road	4
23AR1	PMAC	0.007	2/5/2002	Part of Parcel 23A released for ROW Improvements for Palantine Road	4
25R1	PMAC	0.193		Part of Parcel 25 released for relocated Hintz Road	3
40BR1	PMAC	1.340		Part of Parcel 40 released for relocated Wolf Road	3
43R1	PMAC	4.780		Part of Parcel 43 released for relocated Hintz & Wolf Road	3
45R1	PMAC	0.310		Part of Parcel 45 released for relocated Hintz Road	3
46R1	PMAC	0.320		Part of Parcel 46 released for relocated Hintz Road	3
47R1	PMAC	0.320		Part of Parcel 47 released for relocated Hintz Road	3
48R1	PMAC	0.230		Part of Parcel 48 released for relocated Hintz Road	3
49/50R1	PMAC	1.580		Part of Parcel 49 released for relocated Hintz Road	3
51R1	PMAC	0.220		Part of Parcel 51 released for relocated Hintz Road	3
52BR1	PMAC	0.750		Part of Parcel 52B released for relocated Wolf Road	3
53R1	PMAC	0.300		Part of Parcel 53 released for relocated Wolf Road	3
54R1	PMAC	0.240		Part of Parcel 54 released for relocated Wolf Road	3
56R1	PMAC	0.560		0.56 ac. of the remaining 4.230 ac., of the original (4.790 ac.) of Parcel 56 released for relocated Wolf Road	3
56R2	PMAC	2.460		2.46 Ac. of the 4.23 ac., of Parcel 56 released to public, excess land for relocated Wolf Road	3
58R1	PMAC	0.260		Part of Parcel 58 released for relocated Wolf Road	3
58R2	PMAC	0.020		0.02 ac. Of the remaining 0.74 ac., of the orignal (1.0 ac.) of Parcel 58 released to public, excess land for relocated Wolf Road	3
59R1	PMAC	0.520		Part of Parcel 59 released for relocated Wolf Road	3
59R2	PMAC	0.190		0.19 ac., of the remaining 1.47 ac., of the original (1.99ac.) of Parcel 59 released to public, excess land for relocated Wolf Road	3
84R1	PMAC	0.380		Part of Parcel 84 released for relocated Wolf Road	3
85R1	PMAC	0.840		Part of Parcel 85 released for relocated Wolf Road	3
86R1	PMAC	0.280		Part of Parcel 86 released for relocated Wolf Road	3
87R1	PMAC	0.600		Part of Parcel 87 released for relocated Wolf Road	3
88R1	PMAC	0.560		Part of Parcel 88 released for relocated Wolf Road	3
88R2	PMAC	0.590		0.59 ac., of the remaining 1.44 ac., of the original (1.995ac.) of Parcel 88 released to public, excess land for relocated Wolf Road	3
90R1	PMAC	0.400		Part of Parcel 90 released for relocated Wolf Road	3
90R2	PMAC	0.300		0.3 ac., of the remaining 0.55 ac., of the original (.95 ac.) of Parcel 90 released to public, excess land for relocated Wolf Road	3
91R1	PMAC	0.380		Part of Parcel 91 released for relocated Wolf Road	3
92R1	PMAC	0.280		Part of Parcel 92 released for relocated Wolf Road	3
93R1	PMAC	0.220		Part of Parcel 93 released for relocated Wolf Road	3
94R1	PMAC	0.180		Part of Parcel 94 released for relocated Wolf Road	3

PARCEL #	PREVIOUS OWNER	AC. RELEASED	DATE RELEASED	REMARKS	SHEET #
95R1	PMAC	0.160		Part of Parcel 95 released for relocated Wolf Road	3
97R1	PMAC	0.090		Part of Parcel 97 released for relocated Hintz Road	3
98R1	PMAC	0.020		Part of Parcel 98 released for relocated Hintz Road	3
101/102AR1	PMAC	0.870		Parcel 101/102A released for relocated Wolf/Hintz Road	3
103AR1	PMAC	0.230		Part of Parcel 103A released for relocated Hintz Road	3
104AR1	PMAC	0.230		Part of Parcel 104 released for relocated Hintz Road	3
105R1	PMAC	0.230		Part of Parcel 105 released for relocated Hintz Road	3
106R1	PMAC	0.030		Part of Parcel 106 released for relocated Hintz Road	3
107R1	PMAC	0.230		Part of of Parcel 107, released for relocated Wolf Road	3
107	PMAC	0.267		Remaining acres released of Original (.496 ac.) of Parcel 107	3
108R1	PMAC	0.190		Part of Original (.496 ac.) of Parcel 108 released for relocated Wolf Road	3
108	PMAC	0.306		Remaining acres released of Original (.496 ac.) of Parcel 108	3
109R1	PMAC	0.150		Part of Original (.496 ac.) of Parcel 109 released for relocated Wolf Road	3
109	PMAC	0.346		Remaining acres released of Original (.496 ac.) of Parcel 109	3
110R1	PMAC	0.100		Part of Original (.496 ac.) of Parcel 110 released for relocated Wolf Road	3
110	PMAC	0.396		Remaining acres released of Original (.496 ac.) of Parcel 110	3
111R1	PMAC	0.060		Part of Original (.459 ac.) of Parcel 111 released for relocated Wolf Road	3
111	PMAC	0.399		Remaining acres released of Original (.459 ac.) of Parcel 111	3
112R1	PMAC	0.060		Part of Parcel 112 released for relocated Wolf Road	3
115R1	PMAC	0.010		Part of Parcel 115 released for relocated Wolf Road	4