

EXHIBIT "A" PROPERTY LINE MAP

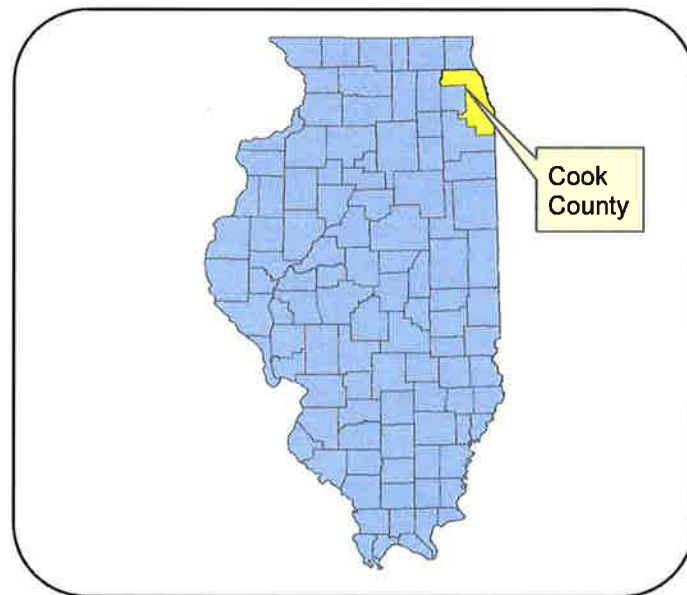
for

PALWAUKEE MUNICIPAL AIRPORT

WHEELING, ILLINOIS

INDEX TO SHEETS

- 1 COVER SHEET
- 2 CURRENT & PROPOSED PROPERTY
- 3 NORTHERN AIRFIELD
- 4 SOUTHERN AIRFIELD
- 5 - 10 FEE ACQUISITION TABLE
- 11 & 12 EASEMENT ACQUISITION TABLE
- 13 & 14 RELEASED PARCEL INFORMATION
- 15 REMARKS TABLE



LOCATION MAP



VICINITY MAP

Version: Version 1
 Project: Palwke.apr
 CMT Job Number: 00290-08
 Date: August 30, 2004
 Map: Exhibit-A-COVER.mxd



APPROVED

DATE

[Signature]
 1/15/06



Illinois Department
 of Transportation
 DIVISION of AERONAUTICS

APPROVED

DATE

[Signature]
 February 8, 2006



CMT

CRAWFORD, MURPHY & TILLY, INC.

SUBMITTED BY

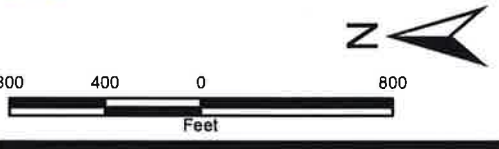
DATE

[Signature]
 1-19-06

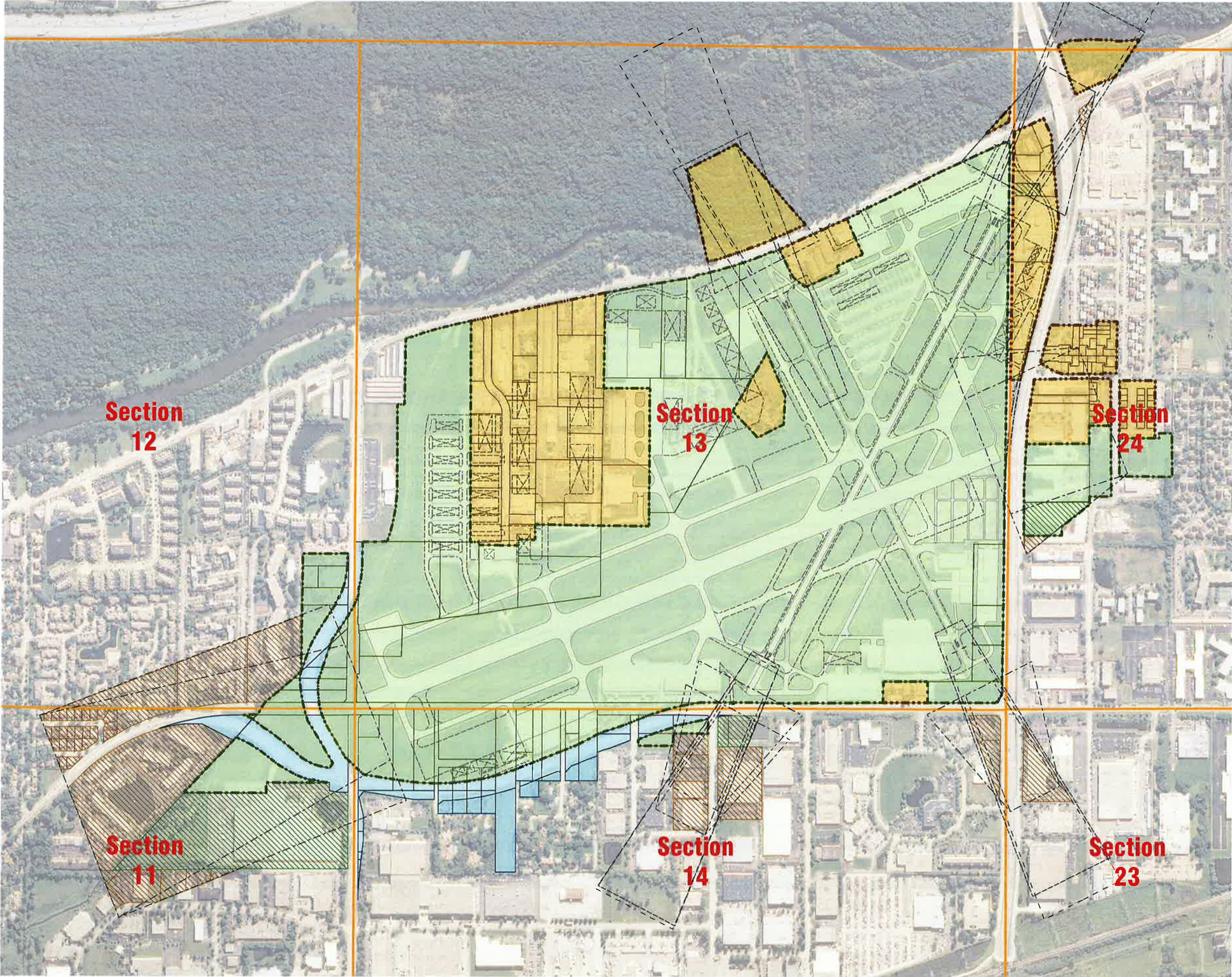
Exhibit A Current & Proposed Property Limits

Legend

- Existing Approach Surfaces
- Future Approach Surfaces
- Future Airfield Improvements
- - - - Existing Airport Property Line
- - - - Future Airport Property Line
- Sections
- Existing Avigation Easements
- Future Avigation Easements
- Released Parcels
- Existing Parcels in Fee
- Future Parcels in Fee



CMT Job No.: 00290-08
Date: February, 2012
Map: Current & Proposed Property
Notes: Photo by NAIP, 2011
Data Input: BWN
Checked By: LJS
Approved By: RAA



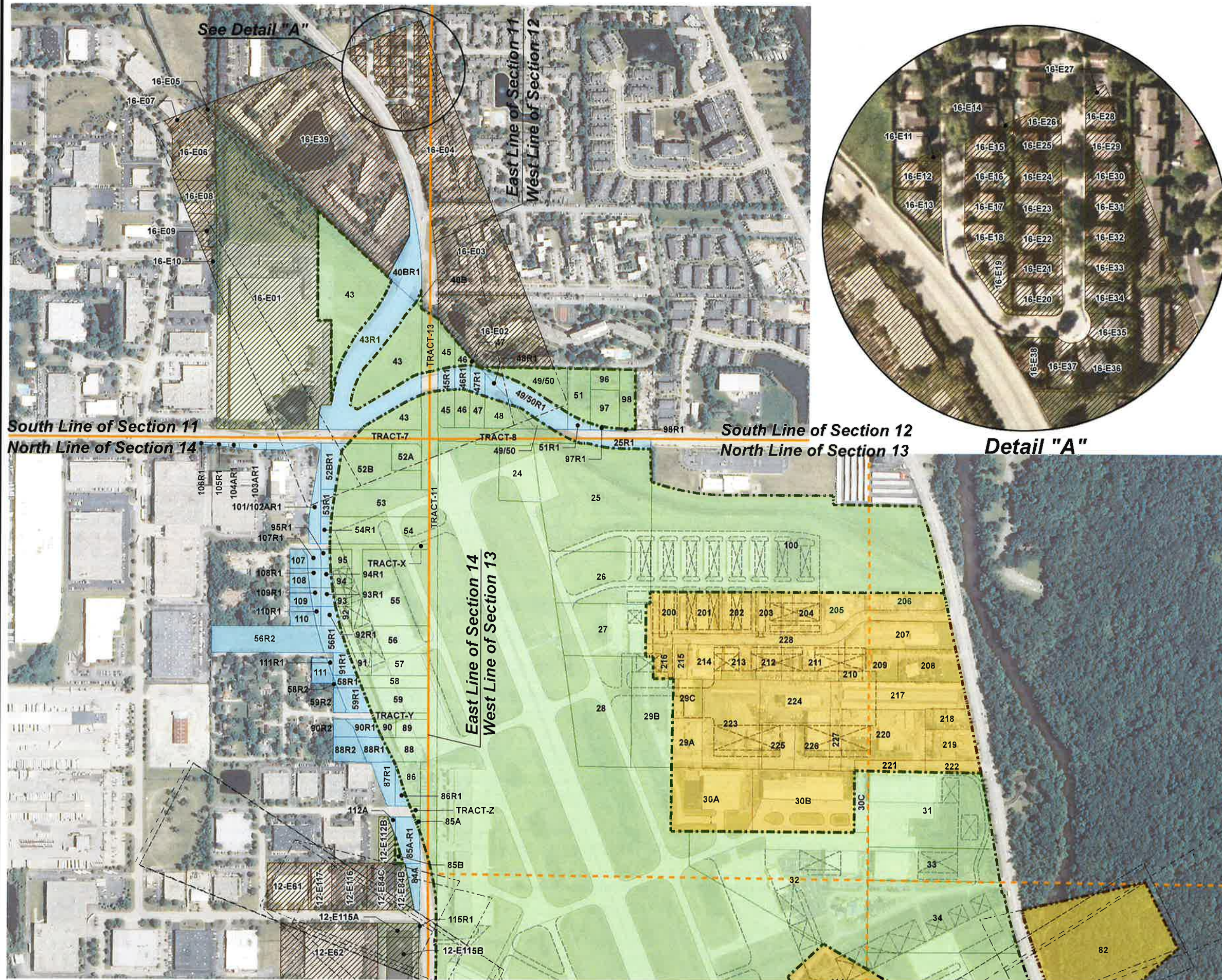
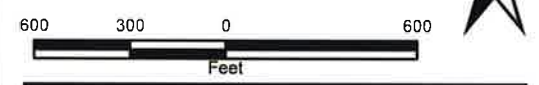


Exhibit A Northern Airfield Property

Legend

- Existing Approach Surfaces
- Future Approach Surfaces
- Existing Threshold Siting Surfaces
- Future Threshold Siting Surfaces
- Future Airfield Improvements
- Existing Airport Property Line
- Future Airport Property Line
- Sections
- Existing Avigation Easements
- Future Avigation Easements
- Released Parcels
- Existing Parcels in Fee
- Future Parcels in Fee

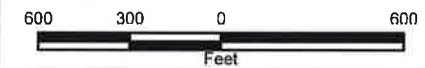


CMT Job No.: 00290-08
 Date: July, 2006
 Updated: July, 2013
 Map: North Airfield Property
 Notes: Photo by NAIP, 2012
 Data Input: BWN
 Checked By: LJS
 Approved By: RAA

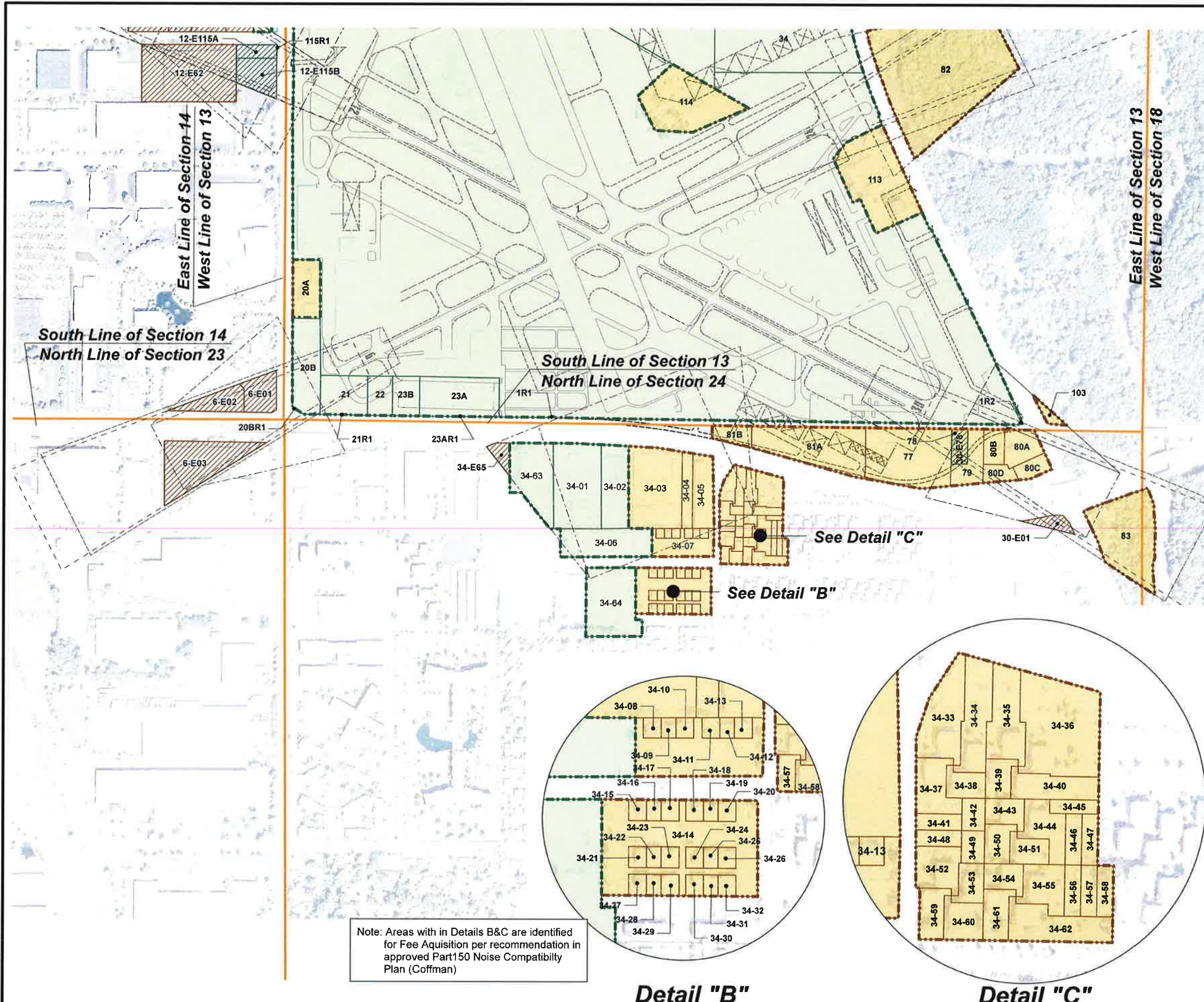
Exhibit A Southern Airfield Property

Legend

- Existing Approach Surfaces
- Future Approach Surfaces
- Existing Threshold Siting Surfaces
- Future Threshold Siting Surfaces
- Future Airfield Improvements
- Existing Airport Property Line
- Future Airport Property Line
- Sections
- Existing Avigation Easements
- Future Avigation Easements
- Released Parcels
- Existing Parcels in Fee
- Future Parcels in Fee



Version: 1.0
 Project: PALWKE-AIS.MXD
 CMT Job No.: 00290-08
 Date: November, 2006
 Map: Current & Proposed Property
 Notes: Photo by Aerial Express; Sept., 2002
 Data Input: BWN
 Checked By: LJS
 Approved By: RAA



Note: Areas with in Details B&C are identified for Fee Aquisition per recommendation in approved Part150 Noise Compatibility Plan (Coffman)

Detail "B"

Detail "C"

PARCEL #	Existing (E) Future (F)	ExistingPREVIOUS OWNER	AREA			FAA PROJ. # ADAP/AIP	DATE ACQUIRED	Remarks	SHEET #
			CURRENT	PURCHASED	FAA PART.				
1	Existing	George J. Priester	266.369	266.369	266.340	AIP-01	6/1/1986	See Remarks	3,4
20B	Existing	American National Bank & Trust Company. Chicago Trust #25528	2.320	2.320	2.320	AIP-06	2/1/1990		4
21	Existing	Harold G. Weiss & Lillian B. Weiss	1.540	1.540	1.540	AIP-06	6/1/1990		4
22	Existing	Erwin Koelper	0.870	0.870	0.870	AIP-06	8/1/1992		4
23A	Existing	See Remarks	2.630	2.630	2.630	AIP-06	8/1/1992	See Remarks	4
23B	Existing	Erwin Koelper & Mabel H. Koelper	0.870	0.870	0.870	AIP-06	8/1/1992		4
24	Existing	Frank R. Chupich & Margaret S. Chupich	1.790	1.790	1.790	AIP-01	9/1/1992		3
25	Existing	Main Bank Trust #78-227	10.427	10.620	10.620	AIP-02	3/30/1990	See Releases	3
26	Existing	Evanston Bank Trust #704	4.170	4.170	4.170	AIP-02	11/13/1990		3
27	Existing	K & L, Braum & Kerr	3.920	3.920	3.920	AIP-01	5/1/1991		3
28	Existing	Cole Taylor Bank Trust #78-179	5.540	5.540	5.540	AIP-01	10/1/1990		3
29B	Existing	Chicago Title & Trust Company Trust #1082519	3.380	3.380	3.380	AIP-02	12/30/1987		3
30C	Existing	Allstate Insurance Company	0.731	0.731	0.731	AIP-02	1/12/1990		3
31	Existing	Allstate Insurance Company	8.040	8.040	8.040	AIP-02	1/12/1990		3
32	Existing	Advance Transportation Company	12.460	12.460	12.460	AIP-01	9/1/1987		3
33	Existing	Advance Transportation Company	3.750	3.750	3.750	AIP-01	9/1/1987		3
34	Existing	Advance Transportation Company	8.880	8.880	8.880	AIP-01	9/1/1987		3
40B	Existing	Algumated Trust & Savings Bank	0.032	1.372	1.372	AIP B6	1/20/1993	See Releases	3
43	Existing	Old Orchard Bank & Trust Company	9.127	13.907	13.907	AIP-06	6/1/1991		3
45	Existing	Kolton	1.120	1.430	1.430	AIP-05	1/1/1991		3
46	Existing	Citizens Bank & Trust Company	0.760	1.080	1.080	AIP-06	1/1/1991		3
47	Existing	Edward Grandt & Doleres Grandt	0.490	0.810	0.810	AIP-07	3/27/1992	See Releases	3
48	Existing	Henry Decicco & Carol Decicco	0.930	1.160	1.160	AIP-06	2/28/1992	See Releases	3
49/50	Existing	Society of Danube Swabians	1.670	3.250	3.250	AIP B6	7/10/1992		3
51	Existing	Chester Jo Bialczak	0.960	1.180	1.180	AIP-B6	7/19/1990	See Releases	3
52A	Existing	Marathon Oil Company	0.740	0.740	0.740	AIP-05	12/19/1988		3
52B	Existing	Emro Land Companay	3.510	4.260	4.260	AIP-05	12/19/1988	See Releases	3
53	Existing	Louis Pinto Pintacura & Vivian Pinto Pintacura	2.200	2.500	2.500	AIP-B7	2/1/1993	See Releases	3
54	Existing	Industrial Towel & Uniform Inc.	2.260	2.500	2.500	AIP-06	6/13/1990	See Releases	3
55	Existing	Paul Szendroil (Universal Air Motive)	3.790	3.790	3.790	AIP-06	5/1/1992		3
56	Existing	Warren G. Ely; Marrengo State Bank	1.770	4.790	4.790	AIP-B6	1/27/1993	See Releases	3
57	Existing	Richard S. Wells & Stella Wells	1.080	1.080	1.080	AIP-B6	8/1/1992		3
58	Existing	James Alexakos	0.720	1.000	1.000	AIP-B6	7/13/1990	See Releases	3

PARCEL #	Existing (E) Future (F)	ExistingPREVIOUS OWNER	AREA			FAA PROJ. # ADAP/AIP	DATE ACQUIRED	Remarks	SHEET #
			CURRENT	PURCHASED	FAA PART.				
52A	Existing	Marathon Oil Company	0.740	0.740	0.740	AIP-05	12/19/1988		3
52B	Existing	Emro Land Companay	3.510	4.260	4.260	AIP-05	12/19/1988	See Releases	3
53	Existing	Louis Pinto Pintacura & Vivian Pinto Pintacura	2.200	2.500	2.500	AIP-B7	2/1/1993	See Releases	3
54	Existing	Industrial Towel & Uniform Inc.	2.260	2.500	2.500	AIP-06	6/13/1990	See Releases	3
55	Existing	Paul Szendroil (Universal Air Motive)	3.790	3.790	3.790	AIP-06	5/1/1992		3
56	Existing	Warren G. Ely; Marrengo State Bank	1.770	4.790	4.790	AIP-B6	1/27/1993	See Releases	3
57	Existing	Richard S. Wells & Stella Wells	1.080	1.080	1.080	AIP-B6	8/1/1992		3
58	Existing	James Alexakos	0.720	1.000	1.000	AIP-B6	7/13/1990	See Releases	3
59	Existing	John & Lynn Traff	1.280	1.990	1.990	AIP-B6	9/8/1992	See Releases	3
85A	Existing	Marquardt	0.038	0.870	0.870	AIP-B7	4/5/1993	See Releases 84A	3
85B	Existing	Marquardt	0.102	0.102	0.102	AIP-B7	4/5/1993		3
86	Existing	1st National Bank of Desplains Trust # 20382038	0.650	0.930	0.930	AIP-B6	8/25/1992	See Releases	3
88	Existing	Eleanor Kasper	0.842	1.995	1.995	AIP-B6	8/2/1992	See Releases	3
89	Existing	Roberts	0.504	0.504	0.504	AIP-B7	3/1/1993		3
90	Existing	Michael M. Marquardt	0.263	0.950	0.950	AIP-B7	2/23/1993	See Releases	3
91	Existing	William F. Nemitz	0.334	0.714	0.714	AIP-B7	1/28/1993	See Releases	3
92	Existing	Paul & Elizabeth Szendroi	0.216	0.496	0.216	AIP-B6	1/5/1993	See Releases	3
93	Existing	Paul & Elizabeth Szendroi	0.276	0.496	0.276	AIP-B6	11/24/1992	See Releases	3
94	Existing	Charlotte Hallman	0.316	0.496	0.316	AIP-B6	1/5/1993	See Releases	3
95	Existing	Richard Smith & Leah Zelders	0.336	0.496	0.496	AIP-B7	3/1/1993	See Releases	3
96	Existing	Cole Taylor Bank	0.503	0.503	0.503	AIP-B6	8/28/1992		3
97	Existing	William & Lillian Mykytivk	0.893	0.983	0.893	AIP-B6	10/27/1992	See Releases	3
98	Existing	Elmer C. Grandt & Ruth E. Grandt	0.829	0.849	0.829	AIP-B6	7/27/1992	See Releases	3
100	Existing	Milwaukee Amusement / M&R Theaters / Loews Theaters	23.581	23.581	23.581	AIP-B11	10/31/1997		3
TRACT-7	Existing	Cook County	0.770	0.770				See Remarks	3
TRACT-8	Existing	Cook County	1.942	1.942				See Remarks	3
TRACT-11	Existing	State of Illinois	5.904	5.904				See Remarks	3
TRACT-13	Existing	State of Illinois	0.884	0.884				See Remarks	3
TRACT-X	Existing	Village of Wheeling	1.127	1.127				See Remarks	3
TRACT-Y	Existing	Village of Wheeling	0.306	0.306				See Remarks	3
TRACT-Z	Existing	Village of Wheeling	0.070	0.070				See Remarks	3
20A	Future	Main Bank Trust #80-201	2.620						4
30A	Future	Household International Inc.	4.345						4

PARCEL #	Existing (E) Future (F)	PREVIOUS OWNER	AREA			FAA PROJ. # ADAP/AIP	DATE ACQUIRED	REMARKS	SHEET #
			CURRENT	PURCHASED	FAA PART.				
30B	F	Allstate Insurance Company	5.376					4	
34-01	F	First National Bank of Skokie	3.637					4	
34-02	F	First National Bank of Skokie	2.026					4	
34-03	F	SLS Management Inc.	3.805					4	
34-04	F	SLS Management Inc.	0.737					4	
34-05	F	Ron Gray	1.295					4	
34-06	F	Part of Briar Lake Subdivision	2.300					4	
34-07	F	Part of Briar Lake Subdivision	1.088					4	
34-08	F	Part of Briar Lake Subdivision	0.074					4	
34-09	F	Part of Briar Lake Subdivision	0.061					4	
34-10	F	Part of Briar Lake Subdivision	0.075					4	
34-11	F	Part of Briar Lake Subdivision	0.075					4	
34-12	F	Part of Briar Lake Subdivision	0.062					4	
34-13	F	Part of Briar Lake Subdivision	0.076					4	
34-14	F	Part of Briar Lake Subdivision	2.194					4	
34-15	F	Part of Briar Lake Subdivision	0.077					4	
34-16	F	Part of Briar Lake Subdivision	0.063					4	
34-17	F	Part of Briar Lake Subdivision	0.077					4	
34-18	F	Part of Briar Lake Subdivision	0.077					4	
34-19	F	Part of Briar Lake Subdivision	0.063					4	
34-20	F	Part of Briar Lake Subdivision	0.077					4	
34-21	F	Part of Briar Lake Subdivision	0.077					4	
34-22	F	Part of Briar Lake Subdivision	0.063					4	
34-23	F	Part of Briar Lake Subdivision	0.077					4	
34-24	F	Part of Briar Lake Subdivision	0.077					4	
34-25	F	Part of Briar Lake Subdivision	0.063					4	
34-26	F	Part of Briar Lake Subdivision	0.077					4	
34-27	F	Part of Briar Lake Subdivision	0.077					4	
34-28	F	Part of Briar Lake Subdivision	0.063					4	
34-29	F	Part of Briar Lake Subdivision	0.077					4	
34-30	F	Part of Briar Lake Subdivision	0.077					4	
34-31	F	Part of Briar Lake Subdivision	0.063					4	
34-32	F	Part of Briar Lake Subdivision	0.077					4	

PARCEL #	Existing (E) Future (F)	PREVIOUS OWNER	AREA			FAA PROJ. # ADAP/AIP	DATE ACQUIRED	REMARKS	SHEET #
			CURRENT	PURCHASED	FAA PART.				
34-33	F	Part of Old Willow Falls Condominium	0.375					4	
34-34	F	Part of Old Willow Falls Condominium	0.331					4	
34-35	F	Part of Old Willow Falls Condominium	0.327					4	
34-36	F	Part of Old Willow Falls Condominium	0.779					4	
34-37	F	Part of Old Willow Falls Condominium	0.213					4	
34-38	F	Part of Old Willow Falls Condominium	0.112					4	
34-39	F	Part of Old Willow Falls Condominium	0.112					4	
34-40	F	Part of Old Willow Falls Condominium	0.223					4	
34-41	F	Part of Old Willow Falls Condominium	0.080					4	
34-42	F	Part of Old Willow Falls Condominium	0.080					4	
34-43	F	Part of Old Willow Falls Condominium	0.112					4	
34-44	F	Part of Old Willow Falls Condominium	0.201					4	
34-45	F	Part of Old Willow Falls Condominium	0.072					4	
34-46	F	Part of Old Willow Falls Condominium	0.088					4	
34-47	F	Part of Old Willow Falls Condominium	0.088					4	
34-48	F	Part of Old Willow Falls Condominium	0.079					4	
34-49	F	Part of Old Willow Falls Condominium	0.080					4	
34-50	F	Part of Old Willow Falls Condominium	0.112					4	
34-51	F	Part of Old Willow Falls Condominium	0.112					4	
34-52	F	Part of Old Willow Falls Condominium	0.201					4	
34-53	F	Part of Old Willow Falls Condominium	0.112					4	
34-54	F	Part of Old Willow Falls Condominium	0.112					4	
34-55	F	Part of Old Willow Falls Condominium	0.201					4	
34-56	F	Part of Old Willow Falls Condominium	0.088					4	
34-57	F	Part of Old Willow Falls Condominium	0.088					4	
34-58	F	Part of Old Willow Falls Condominium	0.088					4	
34-59	F	Part of Old Willow Falls Condominium	0.140					4	
34-60	F	Part of Old Willow Falls Condominium	0.161					4	
34-61	F	Part of Old Willow Falls Condominium	0.144					4	
34-62	F	Part of Old Willow Falls Condominium	0.338					4	
77	F	Fries Automotive	4.306					4	
79	F	Trailwood Automotive	1.084					4	
78	F	Semeria	0.499					4	

PARCEL #	Existing (E) Future (F)	PREVIOUS OWNER	AREA			FAA PROJ. # ADAP/AIP	DATE ACQUIRED	REMARKS	SHEET #
			CURRENT	PURCHASED	FAA PART.				
80A	F	Cairo (McDonalds)	1.021					4	
80B	F	Cairo (Durabill)	0.646					4	
80C	F	Cairo (Focus)	0.531					4	
80D	F	Cairo	0.474					4	
81A	F	Joanne Pollina	3.727					4	
81B	F	Joanne Pollina	0.598					4	
82	F	Forest Preserve	11.979					3,4	
83	F	Forest Preserve	4.112					4	
103	F	Forest Preserve	0.237					4	
113	F	Motel Land Coporation	4.631					4	
114	F	Specially Resturant	3.812					4	
200	F	Part of Industrial Park	1.297					3	
201	F	Part of Industrial Park	1.212					3	
202	F	Part of Industrial Park	1.049					3	
203	F	Part of Industrial Park	1.024					3	
204	F	Part of Industrial Park	1.015					3	
205	F	Part of Industrial Park	1.151					3	
206	F	Part of Industrial Park	1.178					3	
207	F	Part of Industrial Park	2.746					3	
208	F	Part of Industrial Park	1.712					3	
209	F	Part of Industrial Park	0.979					3	
210	F	Part of Industrial Park	0.419					3	
211	F	Part of Industrial Park	1.388					3	
212	F	Part of Industrial Park	0.749					3	
213	F	Part of Industrial Park	1.017					3	
214	F	Part of Industrial Park	1.013					3	
215	F	Part of Industrial Park	0.392					3	
216	F	Part of Industrial Park	0.688					3	
217	F	Part of Industrial Park	3.167					3	
218	F	Part of Industrial Park	0.771					3	
219	F	Part of Industrial Park	1.349					3	
220	F	Part of Industrial Park	3.677					3	
221	F	Part of Industrial Park	0.680					3	

PARCEL #	Existing (E) Future (F)	PREVIOUS OWNER	AREA			FAA PROJ. # ADAP/AIP	DATE ACQUIRED	REMARKS	SHEET #
			CURRENT	PURCHASED	FAA PART.				
222	F	Part of Industrial Park	0.583						3
223	F	Part of Industrial Park	4.302						3
224	F	Part of Industrial Park	2.608						3
225	F	Part of Industrial Park	1.290						3
226	F	Part of Industrial Park	1.400						3
227	F	Part of Industrial Park	0.614						3
228	F	Part of Industrial Park	3.723						3

PARCEL #	Existing (E) Future (F)	PREVIOUS OWNER	AREA			FAA PROJ. # ADAP/AIP	DATE ACQUIRED	REMARKS	SHEET #
			CURRENT	PURCHASED	FAA PART.				
12-E115A	E	Wheeling Center for Industry	0.472	0.472	0.472	AIP-31	9/8/2004	See Remarks	3,4
12-E115B	E	Wheeling Center for Industry	2.629	2.629	2.629	AIP-31	9/8/2004	See Remarks	3,4
16-E01	E	ACCO	23.567	23.567			8/1/1994		3
30-E78	E	First Colonial Trust Company (Semeria Imports)	0.424	0.424	0.424	AIP-29	4/3/2004	See Remarks	4
6-E01	F	Cap Comm Center LLC	1.041						4
6-E02	F	Fresh & GO., Inc.	0.998						4
6-E03	F	D&D Management - Don Crolty	2.936						4
12-E61	F	Crestliner Products Company	1.613						3
12-E62	F	U.S. Tsubaki Inc.	1.522						3,4
12-E84	F	W.W. Grainger	0.518						3,4
12-E116	F	Carl Kupfer	1.227						3
12-E117	F	Othan H. Ochsner II	0.920						3
16-E02	F	Plum Creek Condominium	5.429						3
16-E03	F	Henry Grant & other subdivision	5.790						3
16-E04	F	Harmony Village	5.085						3
16-E05	F	Palwaukee Business Association	0.219						3
16-E06	F	G&Z Industries	2.225						3
16-E07	F	McNally & Nedco	0.227						3
16-E08	F	Kitamura Machinery USA, Inc.	0.983						3
16-E09	F	LaSalle National Bank	0.613						3
16-E10	F	Andrew Sharon	0.247						3
16-E11	F	Fred E. Miller	0.018						3
16-E12	F	Leslie W. Ellis	0.127						3
16-E13	F	IRA Rosenberg	0.170						3
16-E14	F	IRA Massarsky	0.014						3
16-E15	F	Ronald T. Saltz	0.131						3
16-E16	F	Grant Golberg	0.138						3
16-E17	F	Rovner Murphy	0.142						3
16-E18	F	Ty C. Johnson	0.137						3
16-E19	F	Ross & Jennifer Waskin	0.165						3



Version: 1
Project: PWK-AIS
CMT Job Number: 00290-08
Date: October, 2004
Database:PWKGIS.mdb

Report Name:Easements
Data Input by: BWN
Checked by: LJS
Approved by: RAA



**Exhibit A
Easement Acquisition
Table**

PARCEL #	Existing (E) Future (F)	PREVIOUS OWNER	AREA			FAA PROJ. # ADAP/AIP	DATE ACQUIRED	REMARKS	SHEET #
			CURRENT	PURCHASED	FAA PART.				
16-E20	F	Terrance Mollison	0.148					3	
16-E21	F	Peter N. Clark	0.136					3	
16-E22	F	Vladimir Gelfand	0.140					3	
16-E23	F	John Steinfest	0.142					3	
16-E24	F	Susan Blessen	0.146					3	
16-E25	F	Donald G. Johnson	0.140					3	
16-E26	F	Edwin R. & Pamela Uhrik	0.085					3	
16-E27	F	K.R. Nawth	0.227					3	
16-E28	F	Yogesh Patel	0.092					3	
16-E29	F	Francisco Alamazon	0.126					3	
16-E30	F	Ahjana Patel	0.142					3	
16-E31	F	Patricia Ann Hein	0.142					3	
16-E32	F	Ron & Jenny Vody Jr.	0.142					3	
16-E33	F	Peter J. Gizowski	0.142					3	
16-E34	F	Victor Knish	0.141					3	
16-E35	F	Kwok Kong	0.153					3	
16-E36	F	Micheal Abramovich	0.230					3	
16-E37	F	Lapalombello Maria	0.156					3	
16-E38	F	In Ho Park	0.155					3	
16-E39	F	Foxboro Subdivision	17.971					3	
30-E01	F	PABCOR	0.423					4	
34-E63	F	First Bank of Illinois	2.718					4	

PARCEL #	PREVIOUS OWNER	AC. RELEASED	DATE RELEASED	REMARKS	SHEET #
1R1	PMAC	0.026	2/5/2002	Part of Parcel 1 released for ROW Improvements for Palantine Road	4
1R2	PMAC	0.010	2/5/2002	Part of Parcel 1 released for Improvments to Milwaukee Ave.	4
20BR1	PMAC	0.017	2/5/2002	Part of Parcel 20B released for ROW Improvements for Palantine Road	4
21R1	PMAC	0.009	2/5/2002	Part of Parcel 21 released for ROW Improvements for Palantine Road	4
23AR1	PMAC	0.007	2/5/2002	Part of Parcel 23A released for ROW Improvements for Palantine Road	4
25R1	PMAC	0.193		Part of Parcel 25 released for relocated Hintz Road	3
40BR1	PMAC	1.340		Part of Parcel 40 released for relocated Wolf Road	3
43R1	PMAC	4.780		Part of Parcel 43 released for relocated Hintz & Wolf Road	3
45R1	PMAC	0.310		Part of Parcel 45 released for relocated Hintz Road	3
46R1	PMAC	0.320		Part of Parcel 46 released for relocated Hintz Road	3
47R1	PMAC	0.320		Part of Parcel 47 released for relocated Hintz Road	3
48R1	PMAC	0.230		Part of Parcel 48 released for relocated Hintz Road	3
49/50R1	PMAC	1.580		Part of Parcel 49 released for relocated Hintz Road	3
51R1	PMAC	0.220		Part of Parcel 51 released for relocated Hintz Road	3
52BR1	PMAC	0.750		Part of Parcel 52B released for relocated Wolf Road	3
53R1	PMAC	0.300		Part of Parcel 53 released for relocated Wolf Road	3
54R1	PMAC	0.240		Part of Parcel 54 released for relocated Wolf Road	3
56R1	PMAC	0.560		Part of Parcel 56 released for relocated Wolf Road	3
56R2	PMAC	2.459		2.459 ac. Of the 4.23 ac., of Parcel 56 released to public, excess land for relocated Wolf Road	3
58R1	PMAC	0.260		Part of Parcel 58 released for relocated Wolf Road	3
58R2	PMAC	0.021		0.021 ac. Of the remaining 0.74 ac., of the original (1.0 ac.) of Parcel 58 released to public, excess land for relocated Wolf Road	3
59R1	PMAC	0.520		Part of Parcel 59 released for relocated Wolf Road	3
59R2	PMAC	0.190		0.19 ac., of the remaining 1.47 ac., of the original (1.99ac.) of Parcel 59 released to public, excess land for relocated Wolf Road	3
84A	PMAC	0.381		Part of Parcel 84 released for relocated Wolf Road	3
85A-R1	PMAC	0.840		Part of Parcel 85B released for relocated Wolf Road	3
86R1	PMAC	0.280		Part of Parcel 86 released for relocated Wolf Road	3
87R1	PMAC	0.600		Part of Parcel 87 released for relocated Wolf Road	3
88R1	PMAC	0.560		Part of Parcel 88 released for relocated Wolf Road	3
88R2	PMAC	0.593		0.59 ac., of the remaining 1.44 ac., of the original (1.995ac.) of Parcel 88 released to public, excess land for relocated Wolf Road	3
90R1	PMAC	0.400		Part of Parcel 90 released for relocated Wolf Road	3
90R2	PMAC	0.287		0.287 ac., of the remaining 0.55 ac., of the original (.95 ac.) of Parcel 90 released to public, excess land for relocated Wolf Road	3
91R1	PMAC	0.380		Part of Parcel 91 released for relocated Wolf Road	3
92R1	PMAC	0.280		Part of Parcel 92 released for relocated Wolf Road	3
93R1	PMAC	0.220		Part of Parcel 93 released for relocated Wolf Road	3
94R1	PMAC	0.180		Part of Parcel 94 released for relocated Wolf Road	3



CRAWFORD, MURPHY & TILLY, INC.

Version: 1
 Project: PWKGIS.mdb
 CMT Job Number: 00290-08
 Date: February, 2012
 Database: ExARelases

Report Name: Releases
 Data Input by: BWN
 Checked by: LJS
 Approved by: RAA



**Exhibit A
 Released Parcels
 Table**

PARCEL #	PREVIOUS OWNER	AC. RELEASED	DATE RELEASED	REMARKS	SHEET #
95R1	PMAC	0.160		Part of Parcel 95 released for relocated Wolf Road	3
97R1	PMAC	0.090		Part of Parcel 97 released for relocated Hintz Road	3
98R1	PMAC	0.020		Part of Parcel 98 released for relocated Hintz Road	3
101/102AR1	PMAC	0.870		Parcel 101/102A released for relocated Wolf/Hintz Road	3
103AR1	PMAC	0.230		Part of Parcel 103A released for relocated Hintz Road	3
104AR1	PMAC	0.230		Part of Parcel 104 released for relocated Hintz Road	3
105R1	PMAC	0.230		Part of Parcel 105 released for relocated Hintz Road	3
106R1	PMAC	0.030		Part of Parcel 106 released for relocated Hintz Road	3
107R1	PMAC	0.230		Part of of Parcel 107, released for relocated Wolf Road	3
107	PMAC	0.267		Remaining acres released of Original (.496 ac.) of Parcel 107	3
108R1	PMAC	0.190		Part of Original (.496 ac.) of Parcel 108 released for relocated Wolf Road	3
108	PMAC	0.306		Remaining acres released of Original (.496 ac.) of Parcel 108	3
109R1	PMAC	0.150		Part of Original (.496 ac.) of Parcel 109 released for relocated Wolf Road	3
109	PMAC	0.346		Remaining acres released of Original (.496 ac.) of Parcel 109	3
110R1	PMAC	0.100		Part of Original (.496 ac.) of Parcel 110 released for relocated Wolf Road	3
110	PMAC	0.396		Remaining acres released of Original (.496 ac.) of Parcel 110	3
111R1	PMAC	0.060		Part of Original (.459 ac.) of Parcel 111 released for relocated Wolf Road	3
111	PMAC	0.399		Remaining acres released of Original (.459 ac.) of Parcel 111	3
112R1	PMAC	0.060		Part of Parcel 112 released for relocated Wolf Road	3
115R1	PMAC	0.010		Part of Parcel 115 released for relocated Wolf Road	4



CRAWFORD, MURPHY & TILLY, INC.

Version: 1
 Project: PWKGIS.mdb
 CMT Job Number: 00290-08
 Date: February, 2012
 Database: ExARelses

Report Name: Releases
 Data Input by: BWN
 Checked by: LJS
 Approved by: RAA



**Exhibit A
 Released Parcels
 Table**

PARCEL #	REMARKS	SHEET #	REPORT PG #
1	Formerly Parcels 1-19 new designation Parcel 1- excluding buildings	3,4	
TRACT-7	Previously R.O.W. for old Hintz Road	3	
TRACT-8	Previously R.O.W. for old Hintz Road	3	
TRACT-11	Previously R.O.W. for old Wolf Road	3	
TRACT-13	Previously R.O.W. for old Wolf Road	3	
TRACT-X	Previously R.O.W. for old Ande Avenue & Kerry Lane	3	
TRACT-Y	Previously R.O.W. for old Larkin Avenue	3	
TRACT-Z	Previously R.O.W. for old Cindy Lane	3	



CRAWFORD, MURPHY & TILLY, INC.

Version: 1
 Project: gpaa
 CMT Job Number: 00290-08
 Date: October, 2004
 Database: Remarks

Report Name: Remarks
 Data Input by: BWN
 Checked by: LJS
 Approved by: RAA



**Exhibit A
 Remarks
 Table**