


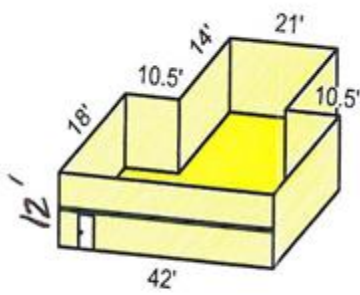


## T- Hangar Diagrams

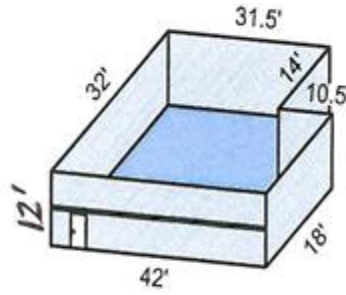
### Northeast T-Hangars

	=	\$473.00
	=	\$539.00
	=	\$631.00



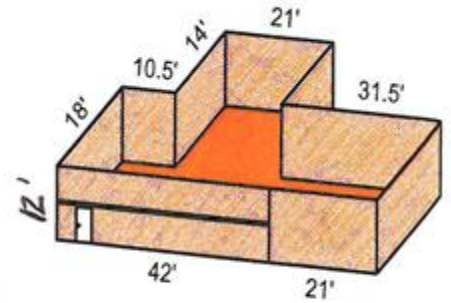
BAY 1 - 7

Approx. 1,050 sq. ft.



BAY 8

Approx. 1,197 sq. ft



BAY 2X

Approx. 1,428 sq. ft.

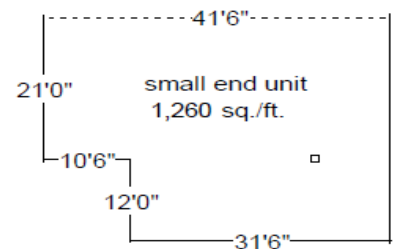
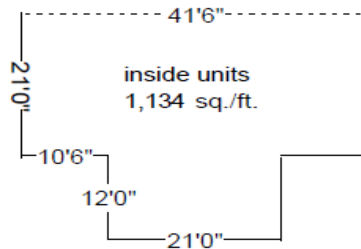
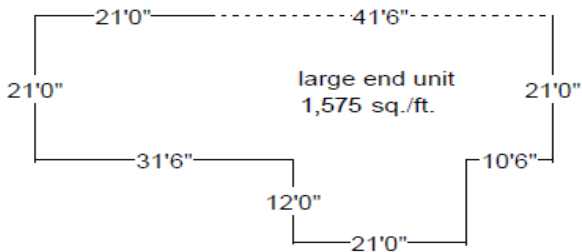
**Northeast T-hangar**

Approximate door opening height: 11'8"

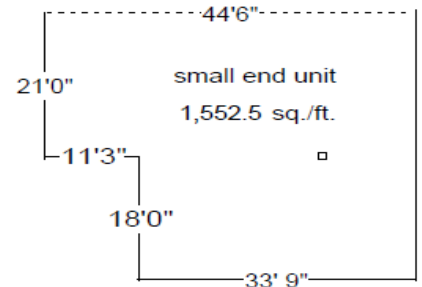
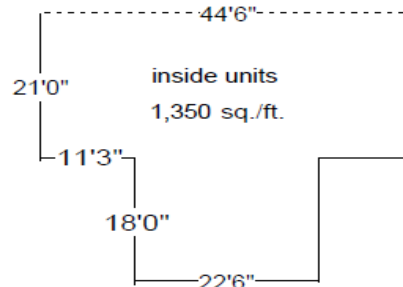
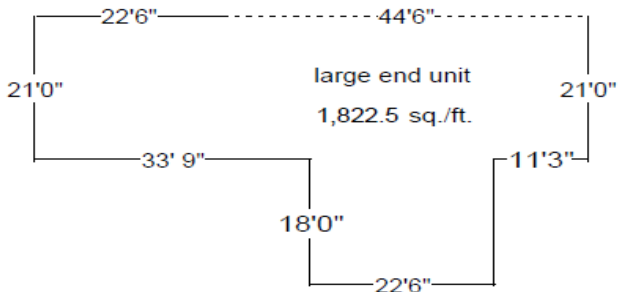
*\*Prices will adjust May 1<sup>st</sup>.*

## T- Hangar Diagrams Southwest T-Hangars

### N54-42



### N60-45



#### N54-42 (TH50)

**Large End Unit (50-2) = \$626.00**

**Inside Units (50-3 thru 50-10) = \$453.00**

**Small End Unit (50-1) = \$498.00**

**Approximate door opening height: 11' 4"**

#### N60-45 (TH51)

**Large End Unit (51-9) = \$718.00**

**Inside Units (51-1 thru 51-8) = \$536.00**

**Small End Unit (51-10) = \$617.00**

**Approximate door opening height: 13' 5"**

*\*Prices will adjust May 1<sup>st</sup>.*